

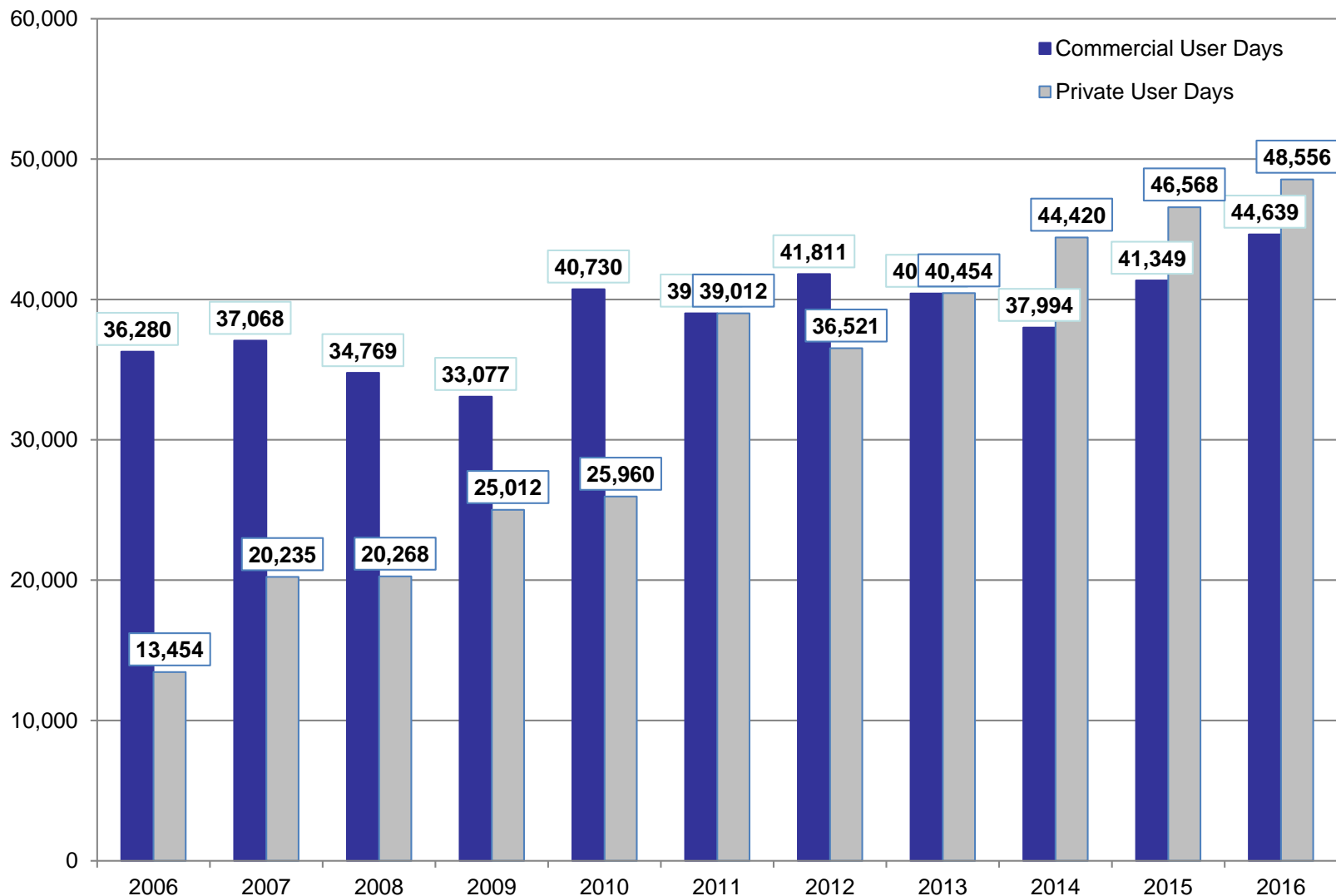
**Upper Colorado River
Special Recreation Management Area
Recreation Area Management Plan
Kremmling Field Office**

**Bureau of Land Management
Kremmling Field Office
2103 E. Park Ave.
P.O. Box 68
Kremmling, CO 80459
Office: 970-724-3000
Fax: 970-724-3066**

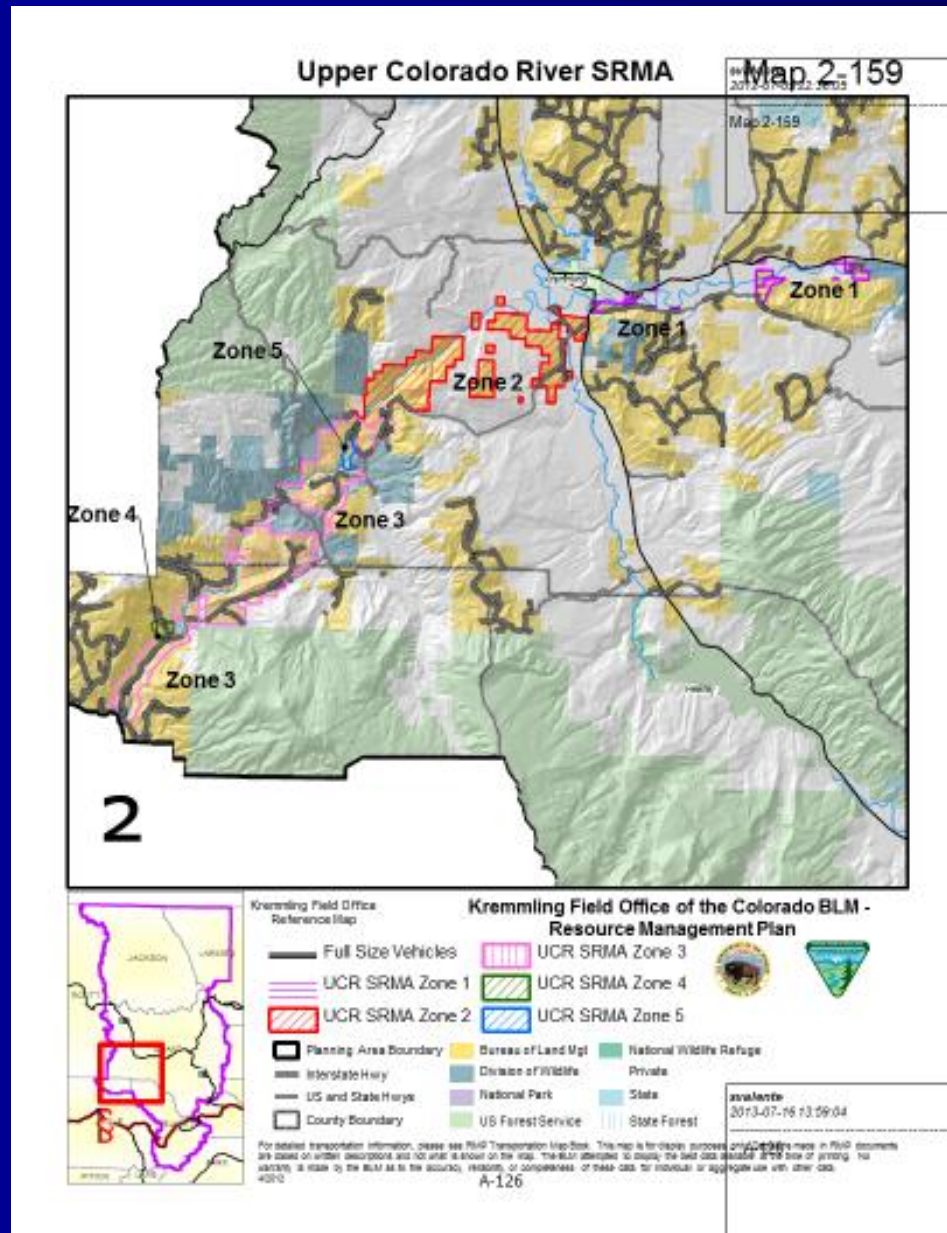


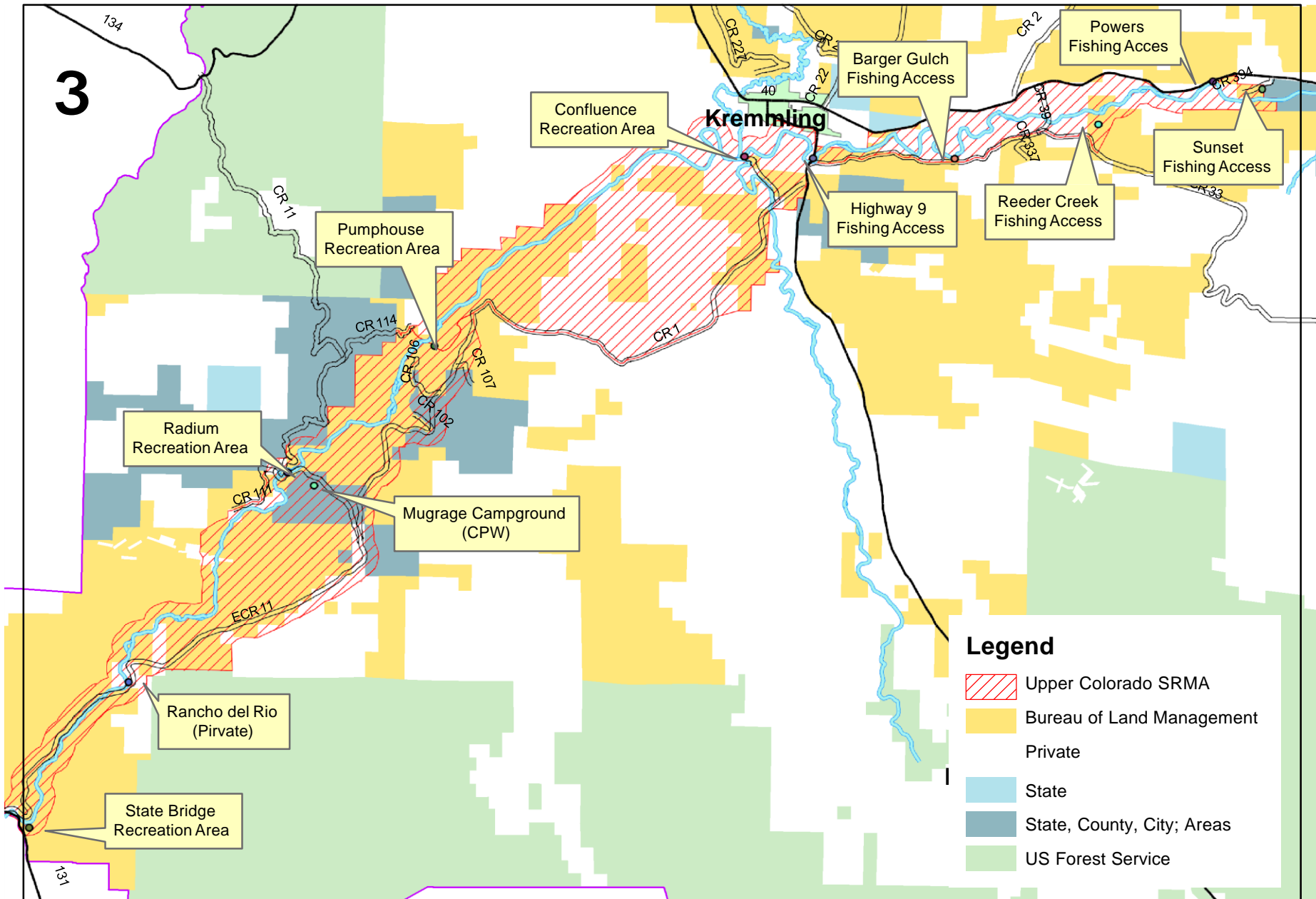
Commercial and Private use on the river between Gore Canyon and State Bridge

Upper Colorado User Days 2006-2016



Recreation Management Zones (RMZs)





Current Issues

User conflicts.

Unregulated use along the river and at warm springs.

Trash and human waste.

Lack of proper equipment.

Current Issues

RVs and Camping Trailers using the lower tent camping loop at Pumphouse. This makes it very difficult to get vehicles in and out, as this area was never designed to be used this way.

The Pumphouse to State Bridge section is commonly referred to as the Daytona Beach of Colorado and the Hepatitis C.

Alternative A

No action alternative

- Day use fees under the current system are collected using Recreation use permits (RUPS) at Pumphouse, Radium and State Bridge
- Group Campsites can be reserved
- Other campsites are first come, first serve (this created conflict as some users will drop off camping equipment at sites days in advance of their actual use.

Alternative B

Permits – Camping Permits would be required for overnight floatboaters, with camping restricted to designated primitive sites, within ¼ mile of the river RMZ 3. Sites would be available for reservation through [recreation.gov](https://www.recreation.gov)

Camping in RMZ 2 and 5, within a ¼ mile of the river would not be allowed.

Hikers would not be allowed to camp within ¼ mile of the river or use designated primitive sites.

Alternative B

Campground Expansion – The Pumphouse Campground would be expanded to include a separate area for RVs/Campers.

Designated River Campsites – Designate 25 campsites, along the river, in RMZ 3.

Alternative B

Travel Management – Designate the Trough Your Rocker Trail as a route open to motorized use and develop a return route to the access route in RMZ 4.

Develop a connector trail between the Pumphouse Recreation Area and the Argentine Trail.

Close the remaining old Trough Road alignment to State Bridge to motorized use by the public.

Alternative C

Preferred Alternative that is the same as Alternative B with the addition of day use permits.

Day Use Permits (Individual Special Recreation Permit, ISRP) would be unlimited, self-issuing, and required for all users (hikers, floatboaters, fisherman, warm spring users, etc) in RMZ 3, 4, and 5.

**** Alternatives B and C will need RAC review and approval. We are hoping to have the document ready for review in late 2018.**

ISRP VS RUP

Recreation Use Permits are used only for recreation sites with certain amenities. It doesn't allow for us to regulate use throughout the river corridor.

Individual Special Recreation Permits allow us to regulate use, throughout the river corridor, by requiring users to comply with regulations through permit stipulations.

Questions?